

# SMI KID WIZZARD

The SMI Kid Wizzard Snowmaker is SMI's smaller Wizzard product that excels in marginal temperatures and small narrow throw areas. The Kid Wizzard is offered in a variety of custom tower and carriage mounts, with a piston or vane compressor, and in manual or automatic.

The Kid Wizzard uses a 7.5HP (5.5 kW) fan and three rings of 45 nozzles per ring that you can customize to achieve the water flows specific to your climate. These 135 heated nozzles are nucleated with a detachable periphery nucleator ring with 15 nucleator nozzles. Water adjustment is easy with two heated self draining valves.

The Kid Wizzard is easy to use, lightweight, very portable and an excellent product for your area.

Call SMI or your local representative today for more information or visit us at [snowmakers.com](http://snowmakers.com)





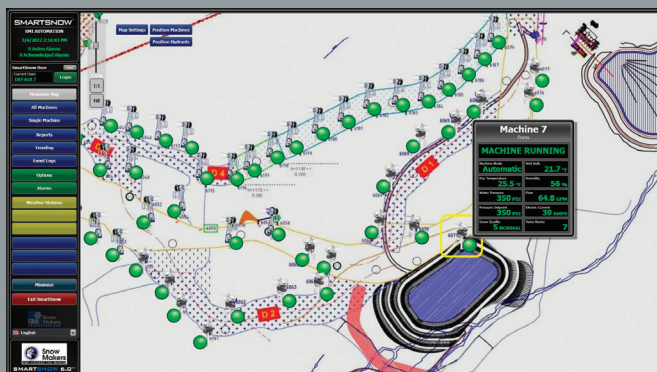
# TECHNICAL SPECIFICATIONS

## KID WIZZARD FLEXIBILITY AND PERFORMANCE

The Kid Wizzard is our smaller size snow machine for marginal conditions and comes with many flexible automation options including remote control and full automatic modes of operation for individual standalone machines or when connected to a complete network.



SMI's SmartSnow™ Automation & Control software is flexible and customizable and offers proven communication options, accurate weather measurement, supporting equipment and instrumentation, integrated auxiliary equipment, and service that is second to none.



- Mount: Tower or 3-wheel galvanized steel carriage with Cat lifting brackets
- Electrical: 63 A
- Fan: 7.5 HP (5.5 kW)  
1760 rpm (1760 U/m) at 480V/60Hz  
1450 rpm (1450 U/m) at 400V/50Hz  
Propeller: Cast Aluminum  
Screen: Stainless Steel
- Compressor:  
5.5 HP (4.8 kW) Atlas Copco, 1.4 cfm at 100 psi (10.1 l/s at 7 bar)  
or 5 HP (3.7 kW) Hydrovane, 22 cfm at 100 psi (10.4 l/s at 7 bar)
- Heating: 1.65 kW
- Water Pressure: 105 – 500 psi (7 – 35 bar)
- Water Connection: Camlock 2"
- Valves: 2 self-draining heated 3-way valves
- Nozzles: 135 nozzles (3 water rings with 45 nozzles each)
- Nucleators: 15 nucleating nozzles
- Filtration System: Stainless steel filter with easy to use washable 60 mesh (250µm) screen
- Electrical Cord: 100' (30 m) cord with plug of customer's choice
- Rotation: 360° horizontal rotation and -10° to 60° elevation adjustment
- Oscillator: electric with 70° arc of rotation, optional
- Warranty: one year on parts and workmanship



Snow Machines, Inc.  
1512 North Rockwell Dr.  
Midland, MI 48642  
Tel: +1-989-631-6091  
Toll Free: +1-800-248-6600  
snowmakers.com