

# SMI SUPER WIZZARD

The SMI Super Wizzard Snowmaker is SMI's best performer for marginal conditions and big throws. The Super Wizzard is offered in a variety of tower and carriage mounts, with a piston or vane compressor, and in manual and automatic mode of operation.

The Super Wizzard offers a 20HP (15 kW) or 25HP (18 kW) fan and 5 rings of 75 nozzles per ring that you can customize to achieve the water flows specific to your climate. These 375 heated nozzles are nucleated with a detachable periphery ring with 20 nucleator nozzles. Water adjustment is easy with four heated self draining valves.

The Super Wizzard is easy to use and will be the first snowmaker to start and last to stop at your resort.

Call SMI or your local representative today for more information or visit us at [snowmakers.com](http://snowmakers.com)





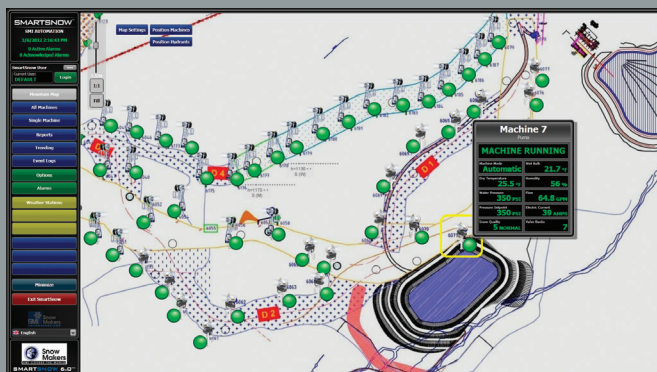
# TECHNICAL SPECIFICATIONS

## SUPER WIZZARD FLEXIBILITY AND PERFORMANCE

The Super Wizzard is SMI's best performer for long throws and marginal conditions and comes with many flexible automation options including remote control and full automatic modes of operation for individual standalone machines or when connected to a complete network.



SMI's SmartSnow™ Automation & Control software is flexible and customizable and offers proven communication options, accurate weather measurement, supporting equipment and instrumentation, integrated auxiliary equipment, and service that is second to none.



- Mount: Tower or 3-wheel galvanized steel carriage with Cat lifting brackets
- Electrical: 3 Phase
- Fan: 20HP (15kW) or 25HP (18kW)  
1760 rpm (1760 U/m) at 480V/60Hz  
1450 rpm (1450 U/m) at 400V/50Hz  
Propeller: Welded Aluminum  
Screen: Stainless Steel
- Compressor:  
5.5 HP (4.8 kW) Atlas Copco, 21.4 cfm at 100 psi (10.1 l/s at 7 bar)  
or: 5 HP (3.7 kW) Hydrovane, 22 cfm at 100 psi (10.4 l/s at 7 bar)  
or: 10 HP (7.5 kW) Hydrovane, 43.3 cfm at 100 psi (20.5 l/s at 7 bar)
- Heating: 4 – 6 kW
- Water Pressure: 100 – 500 psi (7 – 34 bar)
- Water Connection: Customer's choice
- Valves: 4 self-draining heated 3-way valves
- Nozzles: 375 nozzles (5 water rings with 75 nozzles each)
- Nucleators: 20 nucleating nozzles
- Filtration System: Stainless steel filter with easy to use washable 60 mesh (250µm) screen
- Electrical Cord: 100' (30 m) cord with plug of customer's choice
- Rotation: 350° horizontal rotation and -10° to 60° elevation adjustment
- Oscillator: electric with 70° arc of rotation, optional
- Warranty: one year on parts and workmanship



Snow Machines, Inc.  
1512 North Rockwell Dr.  
Midland, MI 48642  
Tel: +1-989-631-6091  
Toll Free: +1-800-248-6600  
snowmakers.com