

SMI SILENT POLECAT

The SMI® Silent PoleCat is a simple nozzle fan snowmaker with dampened noise levels yet still delivers excellent snow production for a range of weather conditions expected from the PoleCat technology.

The Silent PoleCat is perfect for snowmaking in areas sensitive to noise from traditional snowmaking systems. Offered in a variety of custom tower

and carriage mounts, the Silent PoleCat Snowmaker can be powered by a 4 kW vane compressor, or by hill air feed.

Available in manual or automatic mode, the Silent PoleCat uses a 15 HP (11 kW) fan and 18 spray nozzles that are customized to achieve water flows to suit specific climates. Nucleated with a central six-jet nozzle, water flow is easily controlled by three heated, self-draining valves.

The Silent PoleCat is reliable and simple to operate and maintain—an excellent all-around performer for virtually any snowmaking conditions.

Call SMI or your local representative today for more information or visit us at snowmakers.com





TECHNICAL SPECIFICATIONS

SILENT POLECAT FLEXIBILITY AND PERFORMANCE

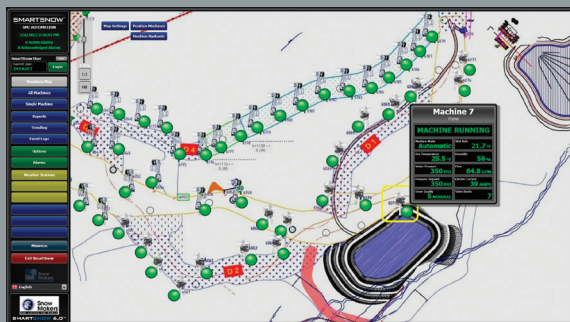
The Silent PoleCat is our quietest snow machine with many flexible automation options including remote control and full automatic modes of operation for individual standalone machines or when connected to a complete network.



SMI's SmartSnow™ Automation & Control software is flexible and customizable and offers proven communication options, accurate weather measurement, supporting equipment and instrumentation, integrated auxiliary equipment, and service that is second to none.

NOISE LEVELS

Sound Level, dB(A)	10 meters	20 meters	50 meters
Front	71	62	54
Back	68	63	53
Side	66	60	51



Snow Machines, Inc.
1512 North Rockwell Dr.
Midland, MI 48642
Tel: +1-989-631-6091
Toll Free: +1-800-248-6600
snowmakers.com

- Mount: 10.5' or 15.5' (3.2 m or 4.7 m) tower or 3 wheel galvanized steel carriage with Snowcat lifting brackets
- Electrical: 3 phase
- Fan:
 - Horsepower: 15 HP (11 kW)
 - Fan Speed: 1760 rpm (1760 U/m) at 480V/60Hz
 - 1450 rpm (1450 U/m) at 400V/50Hz
 - Propeller: SMI patented aluminum
 - Screen: Stainless steel
- Air:
 - Compressor at 480V/60Hz: 5 HP (3,7 kW) Hydrovane, 22 cfm at 100 psi (10,4 l/s at 7 bar) or hill air 60-100cfm at 80psi (28,3 l/s – 47,2 l/s at 5,5 bar)
 - Compressor at 400V/50Hz: 5 HP (3,7 kW) Hydrovane, 22 cfm at 100 psi (10,4 l/s at 7 bar) or hill air 60-100cfm at 80psi (28,3 l/s – 47,2 l/s at 5,5 bar)
- Heating: 225 W
 - Optional spray nozzle heater 500 (at 400V/50Hz), 1300 W (at 480V/60Hz)
 - 900 W Additional if Hill Air
- Water Flow:
 - Carriage suggested 10-100 gpm (30-380 lpm)
 - Tower suggested 18-125 gpm (68-475 lpm)
- Water Pressure: 100-500 psi (7-35 bar)
- Water Connection: Customer's choice
- Valves: Three self-draining heated three-way valves
- Nozzles: Always on banks - 6 nozzles,
 - Valve 1 - 4 nozzles,
 - Valve 2 - 4 nozzles,
 - Valve 3 - 4 nozzles,
 - Total - 18 nozzles
- Nucleators: Central nozzle with six jets
- Filtration System: Stainless steel filter with easy to use, washable 30 mesh screen
- Electrical Cord: Tower 40' (12 m)
Carriage 150' (46 m)
- Rotation: 360° horizontal rotation, -10° to 60° elevation adjustment